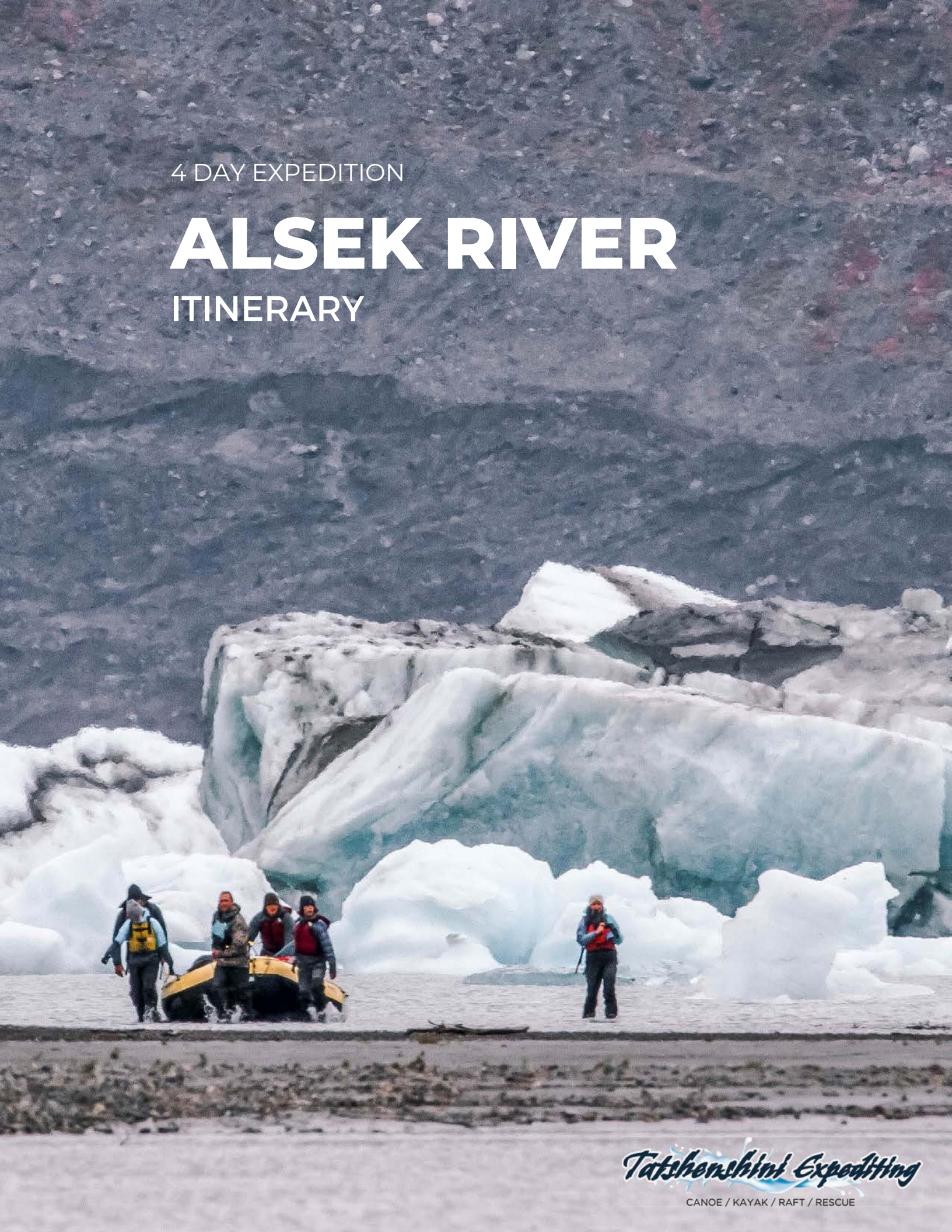


4 DAY EXPEDITION

ALSEK RIVER

ITINERARY



Tatshenshini Expediting

CANOE / KAYAK / RAFT / RESCUE

ITINERARY

DAY 0 - PACKING

We will drop off your dry bags, drysuit, lifejacket, and booties 24-48 hours before your trip to your accommodations in Whitehorse. Make sure all gear fits correctly and pack your personal items in your dry bag!

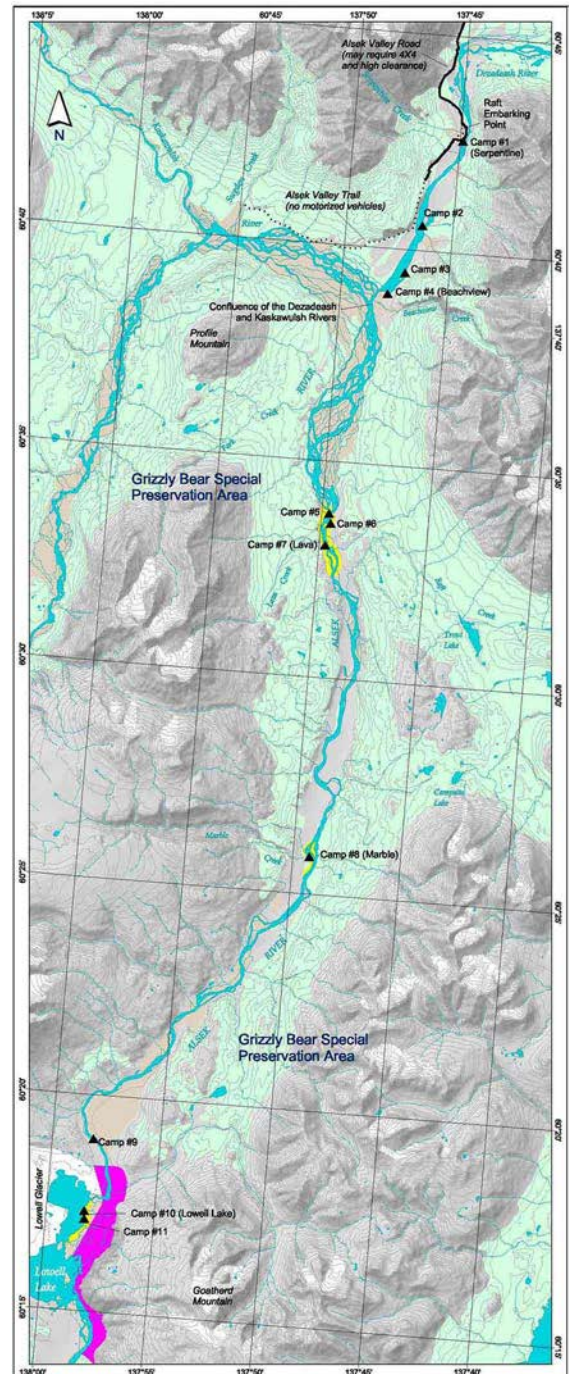
DAY 1 - HIT THE ROAD

We will pick you up from your accommodations in Whitehorse in the morning. We will drive through the scenic Kluane area to Serpentine Creek. After a safety briefing and rafting orientation, we will paddle to the confluence of the Dezadeash and Kaskawulsh rivers that form the Alsek and set up camp for the night deep in the remote wilderness of Kluane.



DAY 2 - MEET THE ALSEK

We will enter the massive braids of the Alsek River, picking up speed as we float and enjoy the vast alpine scenery of the Upper Alsek Valley and the ever-changing geological characteristics at Lava Creek and Marble Creek.



ITINERARY

DAY 3- ENTER LOWELL LAKE

We will paddle a fun section of whitewater rapids before reaching breathtaking Lowell Lake, where we will take in glacial surroundings, icebergs, and massive mountains. We will spend the rest of the day enjoying the scenery by hiking Goatherd Mountain with coastal panoramic views and mountain goats and then paddling around the lake.



DAY 4 - FLY OVER KLUANE

Waking up at Lowell Lake, we will soak up the last views of the lake and mountains before we get picked up by plane and flown back to civilization. We will drop you off at your accommodations in Whitehorse.

