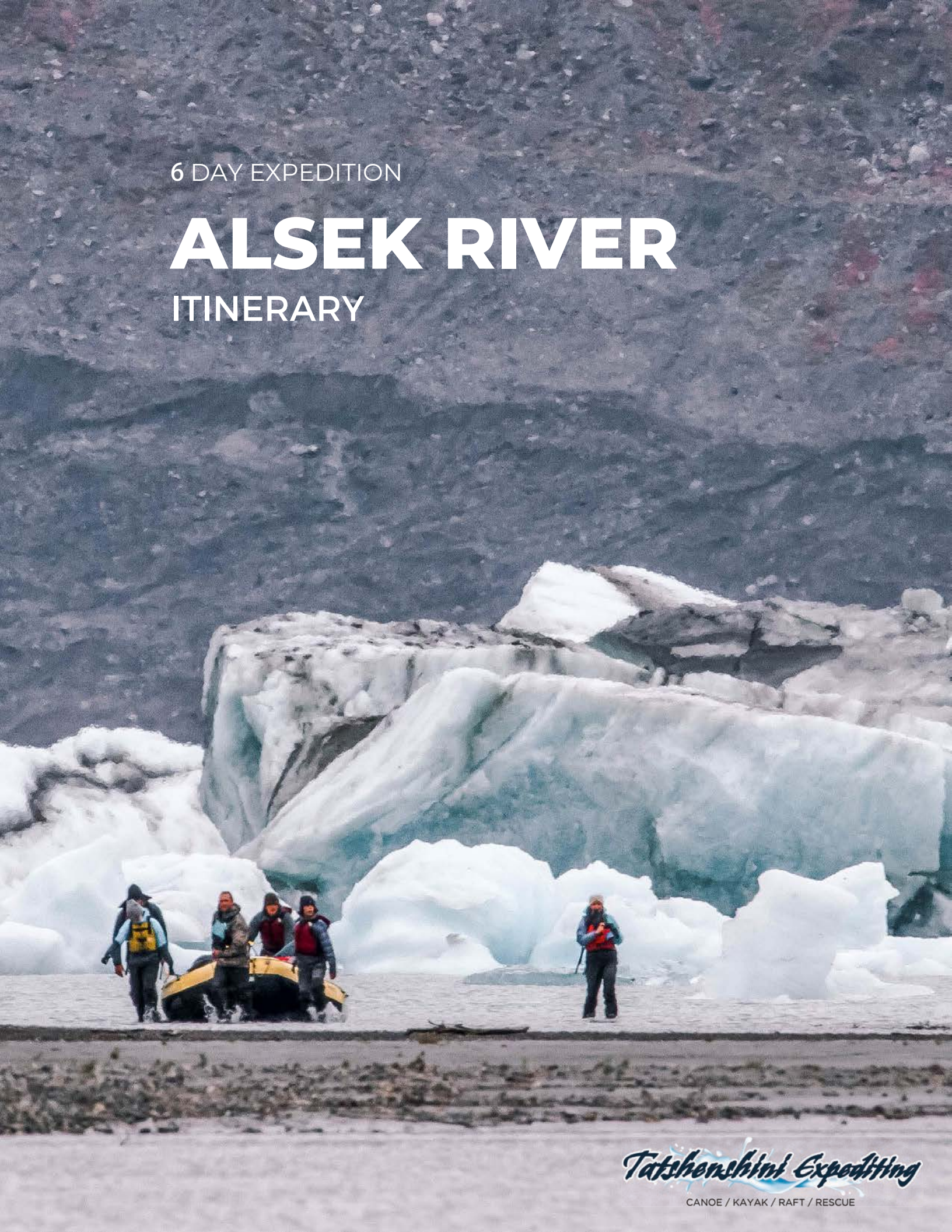


6 DAY EXPEDITION

ALSEK RIVER

ITINERARY



Tatshenshini **Expeditions**

CANOE / KAYAK / RAFT / RESCUE

ITINERARY

DAY 0 - PACKING

We will drop off your dry bags, dry suit, life jacket, and booties 24-48 hours before your trip to your accommodations in Whitehorse. Make sure all gear fits correctly and pack your personal items in your dry bag.

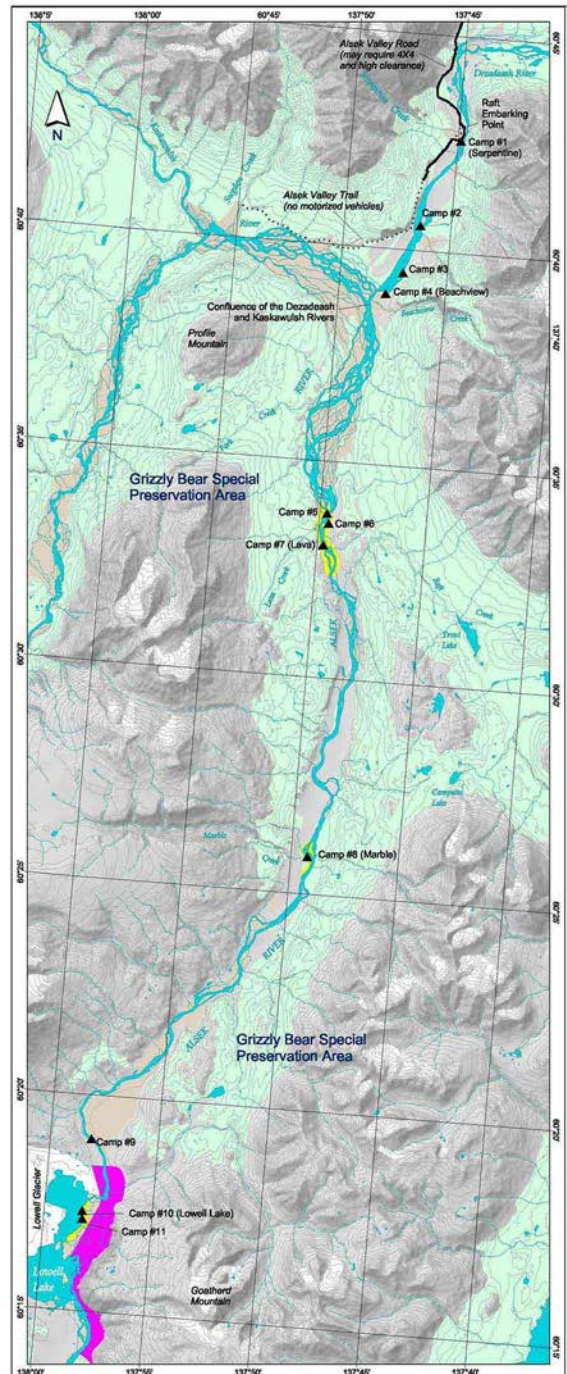
DAY 1 - HIT THE ROAD

We will pick you up from your accommodations in Whitehorse in the morning. We will drive through the scenic Kluane area to the Jarvis River put in. After a safety briefing and rafting/canoeing orientation, we will begin our journey down the intimate Jarvis River.



DAY 2 - MEET THE Jarvis

As we wind our way down the Jarvis river, you are greeted with glimpses of the Icefield Ranges in the distance. Both our paddling and portaging skills will be put to use on this day as we navigate around some obstacles from nature's engineers (beavers!). Our efforts will be greatly rewarded with more amazing views and of course more delicious food



ITINERARY

DAY 3- TURN UP THE VOLUME

Today, the pace of the Jarvis picks up speed as Kimberley and Telluride creeks join forces with the Jarvis. You will notice a clear gradient today as this fun class 2 whitewater section flows down into the Kaskawulsh river below. Here, you will notice the transition from the intimate to the epic as you roll up and down the ocean like swells of the Kaskawulsh



DAY 4 - ALSEK RIVER & ALPINE VALLEY

We will enter the massive braids of the Alsek River, picking up speed as we float and enjoy the vast alpine scenery of the Upper Alsek Valley and the everchanging geological characteristics along its shoreline



ITINERARY

DAY 5-

ENTER LOWELL LAKE

We will paddle a fun section of whitewater rapids before reaching breathtaking Lowell Lake, where we will take in glacial surroundings, icebergs, and massive mountains. We will spend the rest of the day enjoying the scenery by hiking Goatherd Mountain with coastal panoramic views and mountain goats and then paddling around the lake.



DAY 6 -

FLY OVER KLUANE

Waking up at Lowell Lake, we will soak up the last views of the lake and mountains before we get picked up by plane and flown back to civilization. We will drop you off at your accommodations in Whitehorse.

